

TOWMASTER[®] **TRAILERS**



**Air-Pin Detachable Gooseneck
Operations Supplement**

Current and complete warranty details are available at Towmaster.com.

A forward from Towmaster to our valued customers.

This manual includes parts and service information for our current Towmaster trailers. We have put forth our best effort to provide you with common operations and replacement part information. However, Towmaster builds many custom trailers for various customers and cannot guarantee that your particular unit's features are outlined in this manual. If you encounter this problem please contact your dealer. If they cannot be of assistance please feel free to call our Parts Department.

To ensure a more productive call have your trailer's VIN number (serial number) ready as that will be needed to locate the correct replacement parts and answer your technical questions. As a reminder, we do not sell most parts directly; we only sell parts through our dealer network. The Team at Towmaster will make every effort to get you up and running and keep your trailer ownership as trouble free as possible.

Reporting Safety Defects

If you believe that your vehicle has a defect which could cause a crash or could cause injury or death, you should immediately inform the National Highway Traffic Safety Administration (NHTSA) in addition to notifying Towmaster, Inc.

If NHTSA receives similar complaints, it may open an investigation, and if it finds that a safety defect exists in a group of vehicles, it may order a recall and remedy campaign. However, NHTSA cannot become involved in individual problems between you, your dealer, or Towmaster, Inc.

To contact NHTSA, you may either call the Auto Safety Hotline toll-free at 1-800-424-9393 or write to:

NHTSA
U.S. Department of Transportation
400 7th Street SW NSA-11
Washington, DC 20590

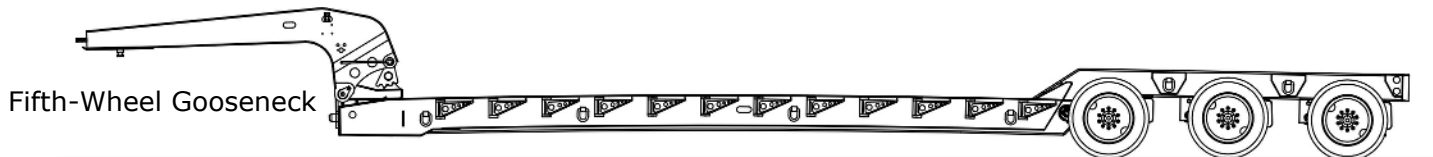
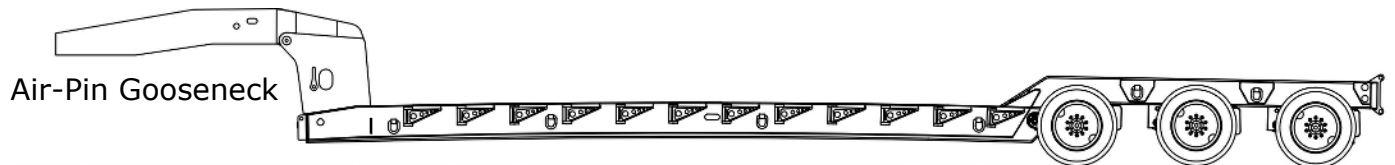
You may also obtain other information about motor vehicle safety from www.safercar.gov.

SECTION I

TRAILER INFORMATION

Trailer and Dealer Information	6
Truck Requirements and Operating Ranges	7
Trailer Terminology	8

TRAILER INFORMATION



Trailer Information

Model Purchased:

Date Purchased:

VIN (serial number):

Axle Serial Numbers (each axle has its own)

Axle 1:

Axle 4:

Axle 2:

Axle 5:

Axle 3:

Dealer Information

Dealer:

Address:

Address:

City, State, Zip:

Phone:

Fax:

Web Address::

Please have serial number available for all orders.

TRUCK REQUIREMENTS / OPERATING RANGES



P.S.I. - 2,800 to 3,000

G.P.M. - 10 GPM minimum, 25 GPM maximum

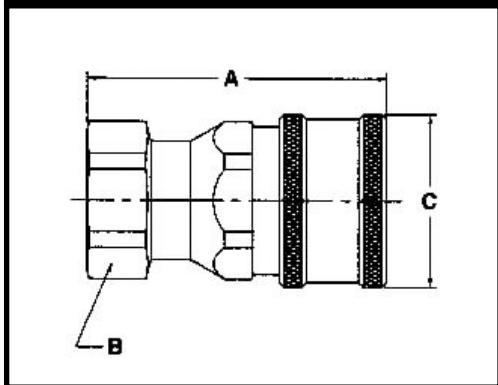
Swing Clearance - See truck dimensions (page 5)

5th Wheel Height - 47" - 52" See truck dimensions (page 5)

Hydraulic Connections - See below...

COUPLER

Towmaster P/N: 37-5972

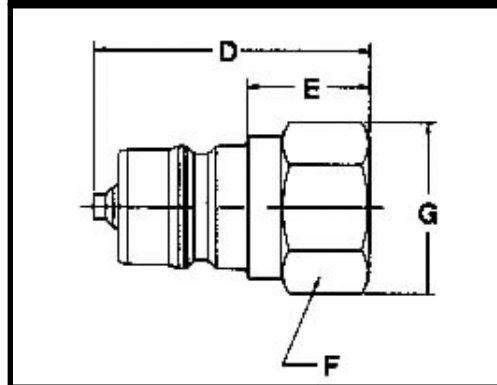


COUPLER

BODY SIZE	3/4
THREAD SIZE (NPTF)	3/4-14
DIM. A	3.36
DIM. B	1.62
DIM. C	1.90

NIPPLE

Towmaster P/N: 37-5971

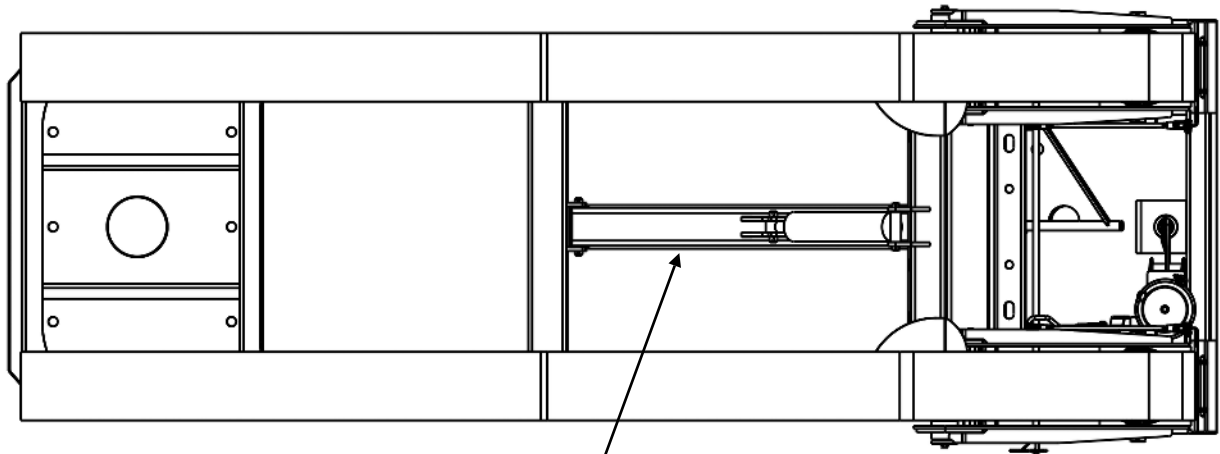


NIPPLE

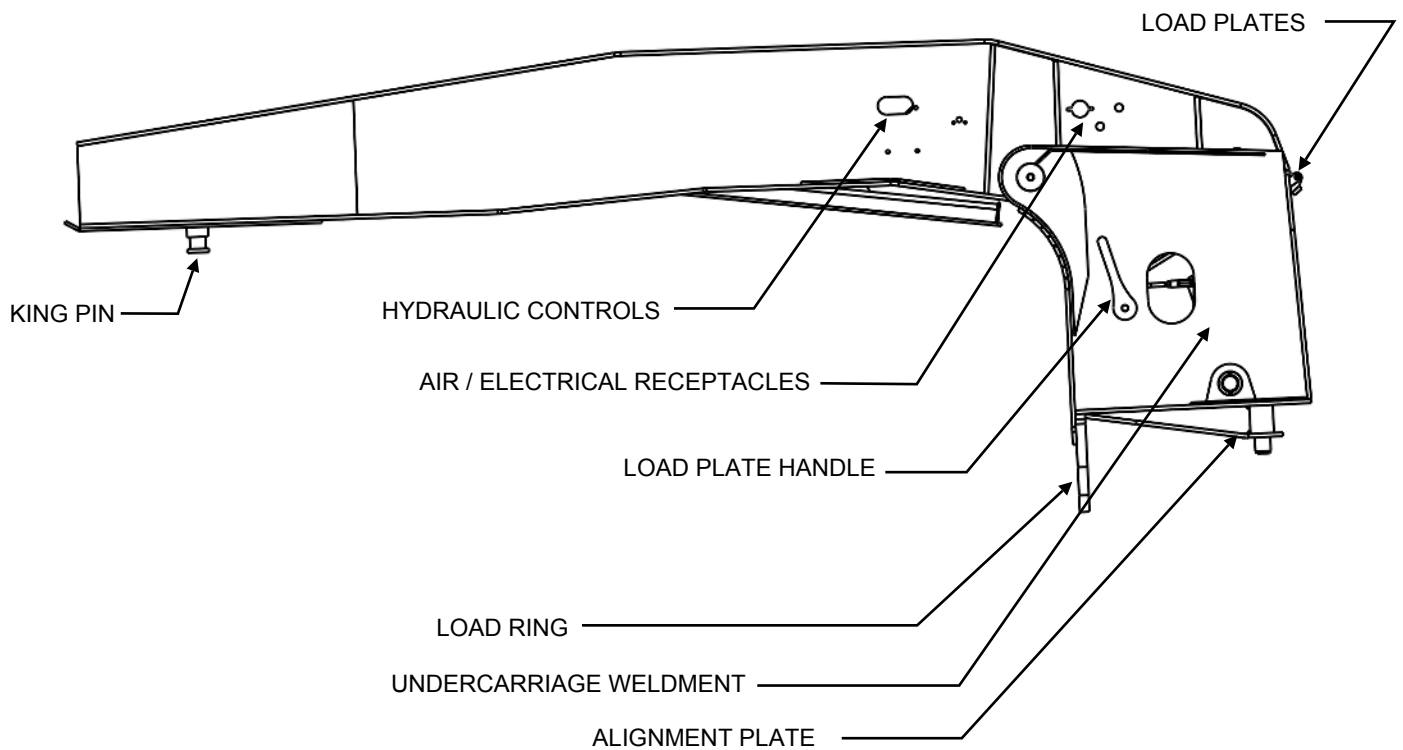
BODY SIZE	3/4
THREAD SIZE (NPTF)	3/4-14
DIM. D	2.28
DIM. E	1.18
DIM. F	1.38
DIM. G	1.59

TERMINOLOGY - AIR-PIN GOOSENECK

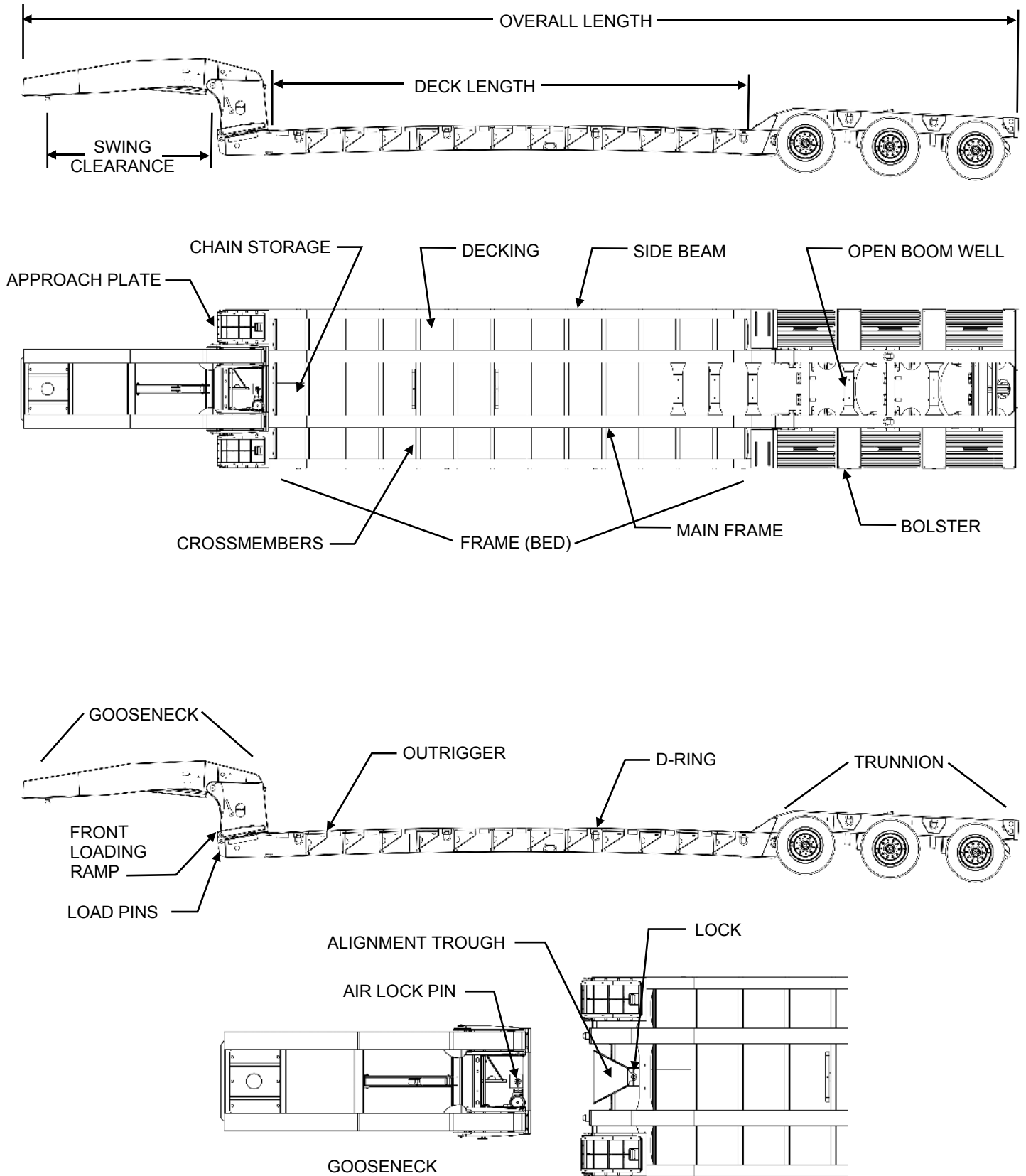
UPPER GOOSENECK WELDMENT



GOOSENECK SUPPORT ARM



TERMINOLOGY - AIR-PIN GOOSENECK



SECTION II

OPERATIONS

Instruction Overview (Decal)	12
Detaching Gooseneck from Main Deck	13
Attaching Gooseneck to Main Deck	16

INSTRUCTION OVERVIEW

These instructions are to help you become familiar with the operation of our product. They are not intended for the purpose of training or to replace common knowledge in operating a detachable gooseneck trailer. Read these instructions before using the Towmaster Detachable Gooseneck trailer.

INSTRUCTION DECALS

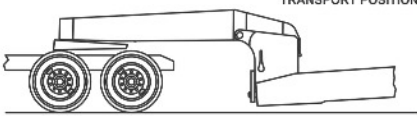
The instructional decals should be affixed to the operating side of the gooseneck on the trailer. If the decals are missing or unreadable, contact our Parts Department for replacements. Read these instructions to familiarize yourself with the operating procedure.

HYDRAULIC DETACHABLE OPERATING INSTRUCTIONS

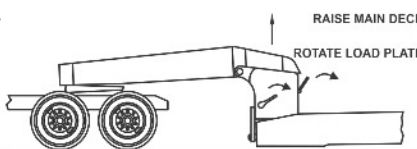
⚠ CAUTION BEFORE OPERATING THIS TRAILER READ AND UNDERSTAND THE TRAILER OPERATION MANUAL

DETACH INSTRUCTIONS

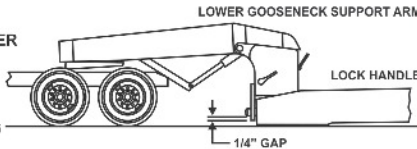
- 1) TRAILER MUST BE PARKED ON LEVEL GROUND IN-LINE WITH TRACTOR
- 2) START HYDRAULIC SYSTEM
- 3) UNPLUG AIR AND ELECTRICAL LINES AND PLACE THEM IN THE MAIN DECK STORAGE
- 4) USING THE PROPER LEVER, RAISE MAIN DECK UNTIL LOAD PLATES CAN OPEN
- 5) LOCK LOAD PLATE LEVER IN THE OPEN POSITION
- 6) USING CONTROL LEVER, LOWER MAIN DECK TO GROUND
- 7) CONTINUE LOWERING MAIN DECK UNTIL ABOUT 1/4" GAP BETWEEN LOAD PIN AND AN RING
- 8) LOWER GOOSENECK SUPPORT ARM TO TRUCK FRAME
- 9) RELEASE AIR LOCK PIN
- 10) DRIVE FORWARD - ADJUST SUPPORT ARM ACCORDINGLY




TRANSPORT POSITION



RAISE MAIN DECK
ROTATE LOAD PLATE



LOWER GOOSENECK SUPPORT ARM
LOCK HANDLE



1/4" GAP
DRIVE FORWARD

NOTE: BEFORE BACKING UP, ADJUST GOOSENECK SUPPORT ARM (1-1/2" GROUND CLEARANCE)

HOOKUP INSTRUCTIONS

- 1) ADJUST GOOSENECK HEIGHT TO BE ABOUT 1-1/2" FROM LOAD RING TO GROUND
- 2) ADJUST UNDERCARRIAGE IF NEEDED
- 3) SLOWLY BACK TOWARD DECK UNTIL AIR PIN LOCKS
- 4) UNDERCARRIAGE WILL SELF-ALIGN, IF NOT, PULL AHEAD AND ADJUST ACCORDINGLY
- 5) MAKE SURE THE PIN IS LOCKED IN POSITION
- 6) RAISE DECK UNTIL LOAD PLATES CAN BE CLOSED
- 7) LOWER DECK TO REST ON LOAD PLATES
- 8) RAISE GOOSENECK SUPPORT ARM
- 9) CONNECT AIR AND ELECTRICAL LINES

⚠ CAUTION

PROPER GOOSENECK HOOKUP

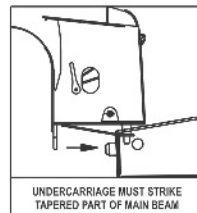
GOOSENECK MUST BE PROPERLY POSITIONED FOR RE-ATTACHMENT OR DAMAGE MAY OCCUR. FOLLOW THIS PROCEDURE FOR PROPER GOOSENECK ALIGNMENT.

1



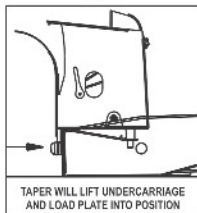
UNDERCARRIAGE
BEAM TAPER
1-1/2" GROUND CLEARANCE

2



UNDERCARRIAGE MUST STRIKE TAPERED PART OF MAIN BEAM

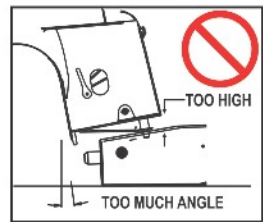
3



TAPER WILL LIFT UNDERCARRIAGE AND LOAD PLATE INTO POSITION

WRONG!

INCORRECT APPROACH TO MAIN DECK. DAMAGE COULD OCCUR IF GOOSENECK APPROACH IS TOO HIGH OR HAS TOO MUCH ANGLE.



TOO HIGH
TOO MUCH ANGLE

OPERATION



IMPORTANT! READ AND UNDERSTAND THIS MANUAL AND ALL SAFETY AND INSTRUCTION DECALS PRIOR TO OPERATING THE TRAILER!

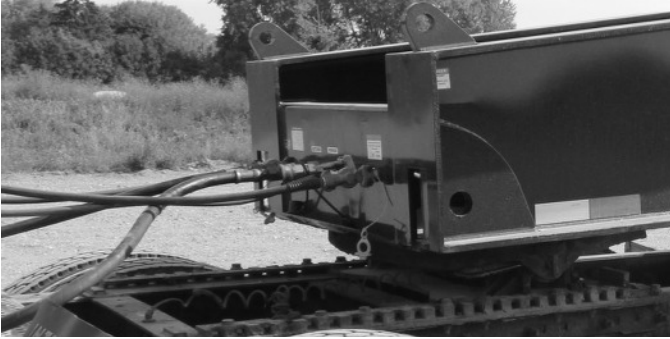
Operation and safety decals are placed in key areas on the trailer and point out important information and safety factors in those areas. Failure to understand and adhere to this instruction may cause serious injury or death.



Before using the trailer, make sure you are in a safe location and parked on solid ground. Make sure the truck and trailer are in a straight line and on level ground.



OPERATION



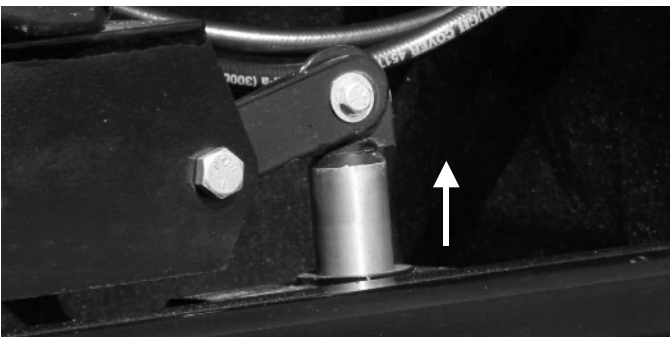
Start the hydraulic system so that oil is flowing to the gooseneck. If your trailer has the pony motor option, start the pony motor according to the instructions on the pony motor decal.



Using the hydraulic control lever, raise the gooseneck until the load plates can be opened.



Open the load plates.



Press the Air-Pin control button to release the Air-Pin Lock.

OPERATION



Using the control levers again, lower the gooseneck to the ground. Stand clear of the deck.

⚠ DANGER

**Stand clear
when lowering deck.**



Using the support arm control lever, lower the gooseneck support arm to the tow vehicle. Use enough pressure to support the gooseneck, but not raise it.



Remove the air and electrical lines from the gooseneck to the trailer bed.

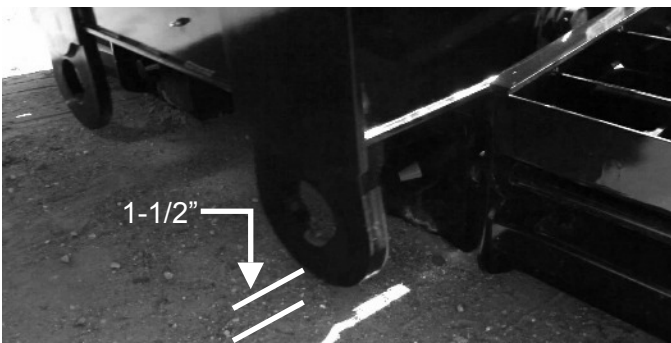


Store them in the storage area at the front of the trailer bed near the front ramp.

OPERATION



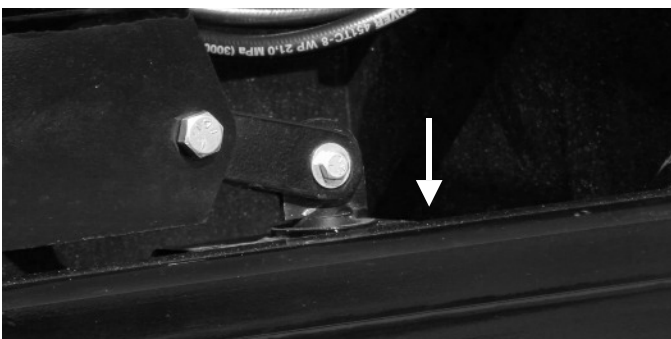
You are now detached from the main deck and ready to drive away.



If the gooseneck happens to rest on the ground, it will be important to raise it by lowering the support arm. When you are ready to reattach the gooseneck to the main deck, raise the gooseneck so that the load rings are approximately 1-1/2 inches off the ground.

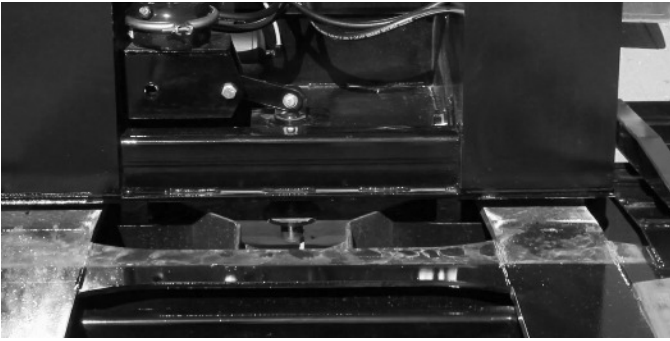


Read the CAUTION decal to make sure the under-carriage is set properly before backing into the main deck or damage may occur.



Before backing into the main deck, use the Air-Pin Lock control button to lower the locking pin.

OPERATION



Back into the main deck with enough force to lock the gooseneck in place.



Using the control lever, lift the gooseneck support arm off the truck frame.



Continue lifting the deck until the support plates can be closed.



If you need a higher transport height for road clearance, you can use the additional load plate spacers.

OPERATION



Lower the gooseneck until it rests on the load plates.



Connect the electrical and air hoses and you're ready for transport.





61381 U.S. Hwy 12
Litchfield, MN 55355
Parts Dept: 320-593-4595

towmaster.com