

TOWMASTER®

AMERICA'S BEST TRAILER



Description:

The Towmaster® T-series large drop-deck trailer is designed for hauling larger mid-sized equipment. This model is built on a stout cold-formed I-beam tongue and main frame and features a 3-inch lip around the deck. The oak wood deck is supported by strong 3-inch I-beam crossmembers and Dexter® Torflex® rubber torsion axles give it a smooth ride.

This trailer features a bolt-on parking jack, LED lights, sealed wiring harness, spring-assist ramps, and a solid bar ramp hold-up.

Quick Specs:

- 2" nominal white oak wood deck
- 24.5" deck height (empty)
- 82" between fenders (84" option T-14D/16D)
- 16', 18', or 20' deck
- Dexter® Torflex® axles
- Electric brakes
- One-piece formed fender and inner panel
- Solid-bar ramp hold-ups
- Grommet mounted LED lights

Photos may show optional equipment.



84" load width option available on T-14D and T-16D!



Cold-formed one-piece I-beam tongue and main frame provide the strength you need to haul your equipment.



Sealed battery break-away system charges while plugged into the tow vehicle and can be checked at the press of a button.



Spring-assist heavy-duty ramps are standard.

towmaster.com

800-462-4517

U.S.A. BUILT EMPLOYEE OWNED



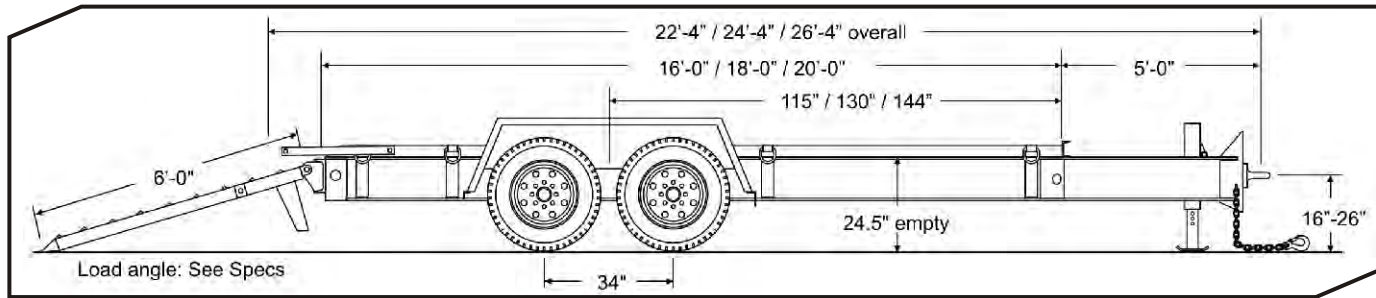
GALVANIZING
AVAILABLE



Drop-Deck
T-14D / T-16D / T-18D / T-20D

T-14D / T-16D / T-18D / T-20D

AMERICA'S BEST TRAILER



SPECIFICATIONS

S=Standard O=Optional

CAPACITY / DIMENSIONS	T-14D	T-16D	T-18D	T-20D
Approx. Payload (lbs/kg)	14,000 / 6350	16,000 / 7257	18,000 / 8165	20,000 / 9072
GVWR (lbs/kg)	18,200 / 8255	20,600 / 9344	22,600 / 10,251	24,600 / 11,158
GAWR (lbs/kg)	14,400 / 6531	16,000 / 7257	19,220 / 8718	20,000 / 9072
Approx. Avg. Weight (lbs/kg)	4,200 / 1905	4,600 / 2086	4,600 / 2086	4,600 / 2086
Overall Length – 16' (ft-in/mm)	22-4 / 6807	22-4 / 6807	22-4 / 6807	22-4 / 6807
Overall Length – 18' (ft-in/mm)	24-4 / 7417	24-4 / 7417	24-4 / 7417	24-4 / 7417
Overall Length – 20' (ft-in/mm)	26-4 / 8027	26-4 / 8027	26-4 / 8027	26-4 / 8027
Deck Height (empty)(in/mm)	24.5 / 622	24.5 / 622	24.5 / 622	24.5 / 622
Overall Width (ft-in/mm)	8-6 / 2591	8-6 / 2591	8-6 / 2591	8-6 / 2591
Load Width (in/mm)	82 / 2083	82 / 2083	82 / 2083	82 / 2083
TONGUE				
Tongue Length 5'-0" (1524mm)	S	S	S	S
One-Piece Cold-Formed Tongue / Frame	S	S	S	S
Pintle Ring (in)	3	3	3	3
High-Tensile Safety Chain	3/8" Grade 70	3/8" Grade 70	3/8" Grade 70	3/8" Grade 70
Bolt-on Drop-Leg Parking Jack	12K	12K	12K	12K
FRAME / RAMPS				
Main Beam	High-Tensile W10 x 12	High-Tensile W10 x 17	High-Tensile W10 x 17	High-Tensile W10 x 17
Crossmembers	3" Jr I-beam	3" Jr I-beam	3" Jr I-beam	3" Jr I-beam
Headboard Height (in / mm)	4 / 102	4 / 102	4 / 102	4 / 102
Deck	2" nom. White Oak	2" nom. White Oak	2" nom. White Oak	2" nom. White Oak
Deck Lip (in / mm)	4 / 102	4 / 102	4 / 102	4 / 102
Ramps (Ladder Style) Length x Width (ft-in x in/mm)	6-0x18 / 1829x470	6-0x18 / 1829x470	6-0x18 / 1829x470	6-0x18 / 1829x470
Load Angle (degrees)	17	17	17	18
Ramp Spring-Assist	S	S	S	S
Ramp Hold-ups	Solid Bar	Solid Bar	Solid Bar	Solid Bar
Tie Downs	D-ring	D-ring	D-ring	D-ring
Number of Tie-Downs (Total / Side)	8 / 4	8 / 4	8 / 4	8 / 4
SUSPENSION / TIRES				
Rubber-Ride Axles w/Warranty	S	S	S	S
Axle Capacity (each) (lbs/kg)	7,200 / 3266	8,000 / 3629	10,000 / 4536	10,000 / 4536
Axle Spread (in/mm)	34 / 864	34 / 864	34 / 864	34 / 864
Hubs	E-Z Lube	E-Z Lube	Oil Bath	Oil Bath
Electric Brakes	S	S	S	S
Brake Size (in/mm)	12.25x2.5 / 311x64	12.25x3.38 / 311x86	12.25x3.38 / 311x86	12.25x3.38 / 311x86
Battery Break-Away Kit with Tow Charger	S	S	S	S
Wheels (in/mm)	17.5x6.75 / 445x171	17.5x6.75 / 445x171	17.5x6.75 / 445x171	17.5x6.75 / 445x171
Wheel Bolt Pattern	8-bolt	8-bolt	8-bolt	8-bolt
Tires / Load Range Rating	215/75R x 17.5 / H	215/75R x 17.5 / H	215/75R x 17.5 / H	235/75R x 17.5 / H

STANDARD EQUIPMENT

- Adjustable hitch height
- Weather resistant sealed modular wiring
- Grommet mounted LED lights
- Registration holder
- Rust inhibiting primer
- Durable, rust inhibiting top coat
- Die-cut UV resistant vinyl decals
- D.O.T. approved conspicuity tape
- Mud flaps
- Adjustable ramp width spacing
- RV electrical plug
- Trailer color: Equipment black
- Ramp color: Equipment red

OPTIONAL EQUIPMENT

Other options may be available
See your dealer or visit our web site for details

- 25K parking jack
- 2-5/16" ball coupler
- Gooseneck hitch
- 6-pole round electrical plug
- 84" deck width on T-14D/T-16D only (open fenders)- adds 2" to deck height on T-16D
- Storage tray lid
- Pallet fork holders
- 8K electric winch
- Additional tie-downs
- 3 ft. beavertail (comes with 5 ft. ramps)
- Spare tire and wheel mount
- Spare tire and wheel
- Tire upgrades available on select models
- Several ramp options available
Color options: Construction Yellow, Equipment Red, Equipment Blue, Equipment Charcoal Galvanizing

U.S.A. DESIGNED AND BUILT IN LITCHFIELD, MN

*Listed GVWR and weights are for reference only. Weights can vary due to options installed.

All dimensions are approximate. Check our website or see your authorized dealer for more information.

Manufacturer reserves the right to modify, change or discontinue models or options as seen fit without obligation to previously sold units. Written warranty covers each trailer. Photos may not show most recent changes to models.